

Product datasheet for TA804317

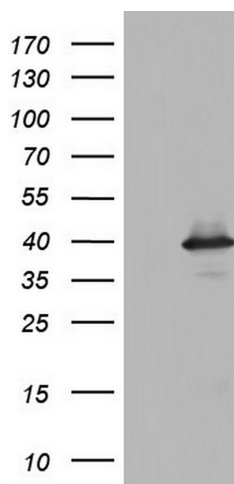
UFD1 Mouse Monoclonal Antibody [Clone ID: OTI8G6]

Product data:

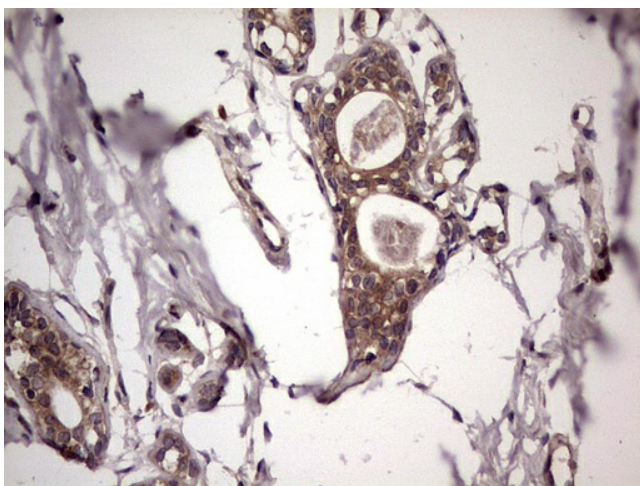
Product Type:	Primary Antibodies
Clone Name:	OTI8G6
Applications:	IHC, WB
Recommend Dilution:	WB 1:2000, IHC 1:150
Reactivity:	Human
Host:	Mouse
Isotype:	IgG1
Clonality:	Monoclonal
Immunogen:	Full length human recombinant protein of human UFD1L (NP_005650) produced in E.coli.
Formulation:	PBS (PH 7.3) containing 1% BSA, 50% glycerol and 0.02% sodium azide.
Concentration:	1 mg/ml
Purification:	Purified from mouse ascites fluids or tissue culture supernatant by affinity chromatography (protein A/G)
Predicted Protein Size:	34.3 kDa
Gene Name:	ubiquitin fusion degradation 1 like (yeast)
Database Link:	NP_005650 Entrez Gene 7353 Human
Synonyms:	UFD1

[View online »](#)

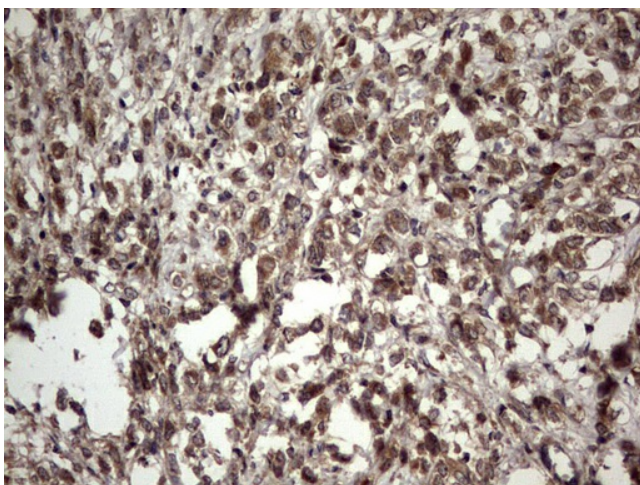
Product images:



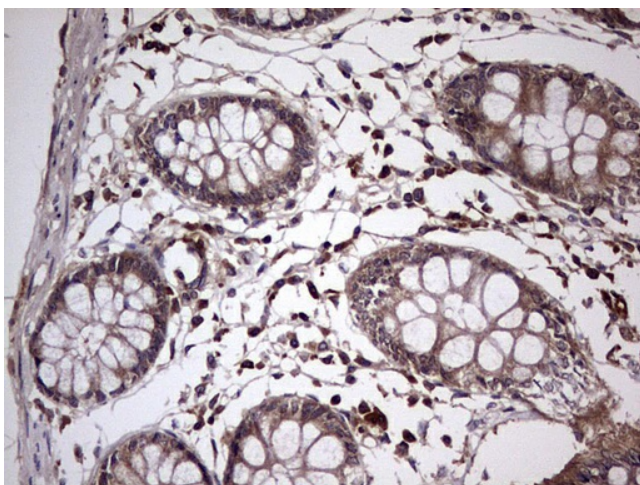
HEK293T cells were transfected with the pCMV6-ENTRY control (Left lane) or pCMV6-ENTRY UFD1L ([RC202989], Right lane) cDNA for 48 hrs and lysed. Equivalent amounts of cell lysates (5 ug per lane) were separated by SDS-PAGE and immunoblotted with anti-UFD1L. Positive lysates [LY417150] (100ug) and [LC417150] (20ug) can be purchased separately from OriGene.



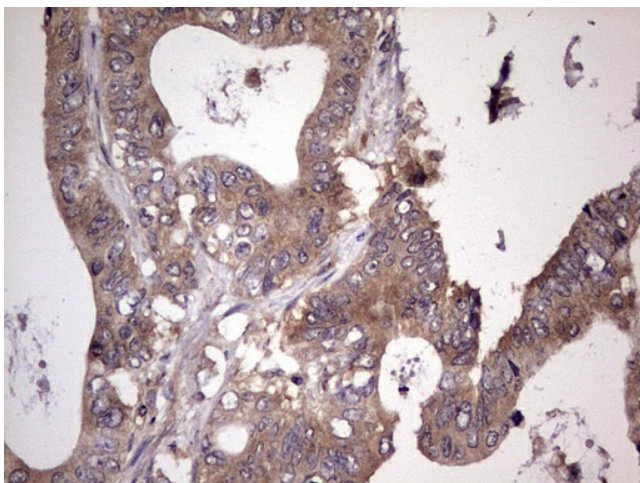
Immunohistochemical staining of paraffin-embedded Human breast tissue within the normal limits using anti-UFD1L mouse monoclonal antibody. (Heat-induced epitope retrieval by 1 mM EDTA in 10mM Tris, pH8.5, 120°C for 3min, TA804317)



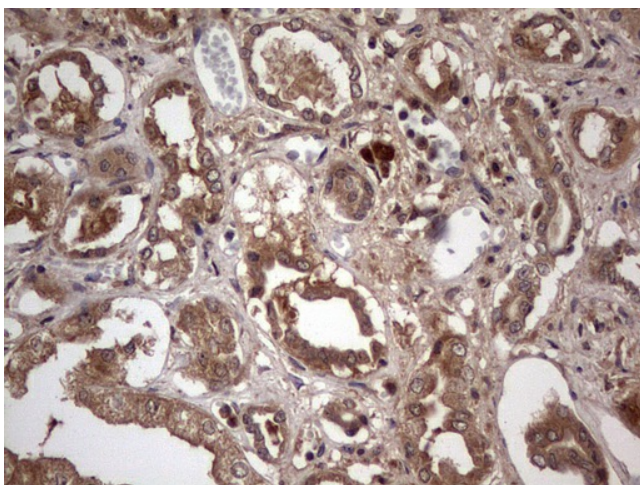
Immunohistochemical staining of paraffin-embedded Adenocarcinoma of Human breast tissue using anti-UFD1L mouse monoclonal antibody. (Heat-induced epitope retrieval by 1 mM EDTA in 10mM Tris, pH8.5, 120°C for 3min, TA804317)



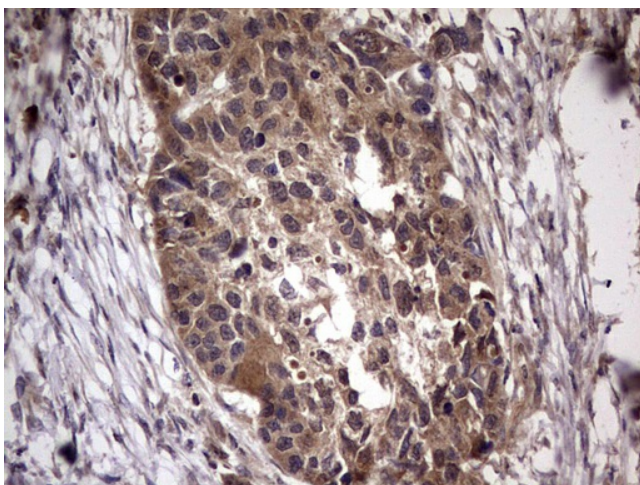
Immunohistochemical staining of paraffin-embedded Human colon tissue within the normal limits using anti-UFD1L mouse monoclonal antibody. (Heat-induced epitope retrieval by 1 mM EDTA in 10mM Tris, pH8.5, 120°C for 3min, TA804317)



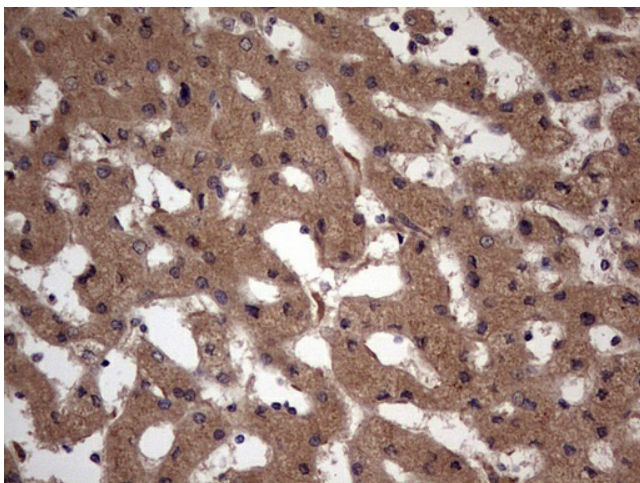
Immunohistochemical staining of paraffin-embedded Adenocarcinoma of Human colon tissue using anti-UFD1L mouse monoclonal antibody. (Heat-induced epitope retrieval by 1 mM EDTA in 10mM Tris, pH8.5, 120°C for 3min, TA804317)



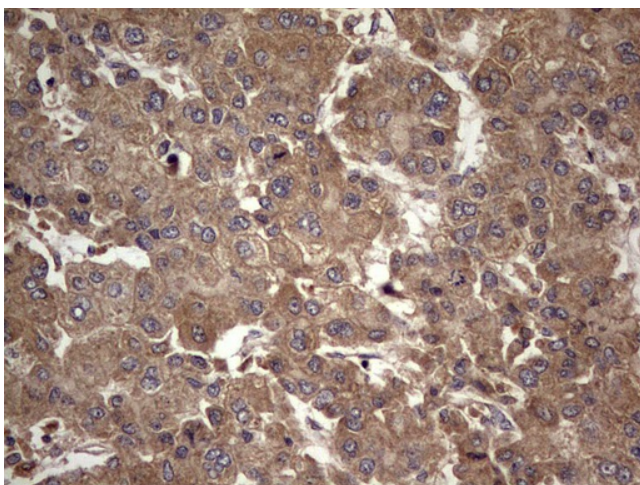
Immunohistochemical staining of paraffin-embedded Human Kidney tissue within the normal limits using anti-UFD1L mouse monoclonal antibody. (Heat-induced epitope retrieval by 1 mM EDTA in 10mM Tris, pH8.5, 120°C for 3min, TA804317)



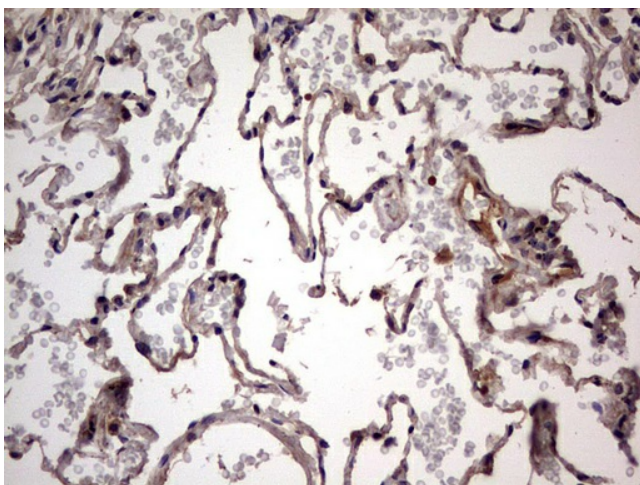
Immunohistochemical staining of paraffin-embedded Carcinoma of Human kidney tissue using anti-UFD1L mouse monoclonal antibody. (Heat-induced epitope retrieval by 1 mM EDTA in 10mM Tris, pH8.5, 120°C for 3min, TA804317)



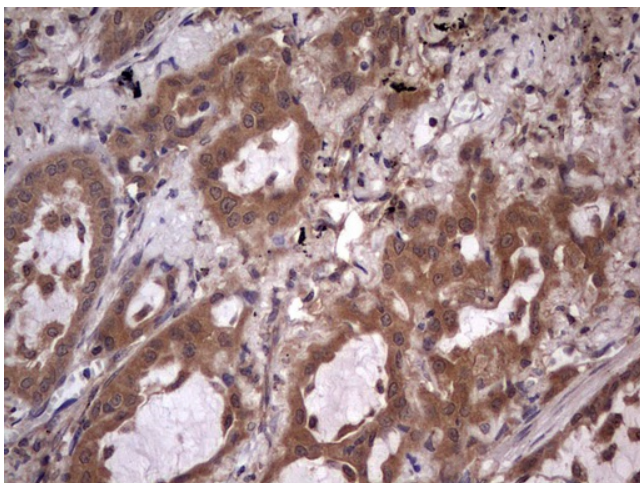
Immunohistochemical staining of paraffin-embedded Human liver tissue within the normal limits using anti-UFD1L mouse monoclonal antibody. (Heat-induced epitope retrieval by 1 mM EDTA in 10mM Tris, pH8.5, 120°C for 3min, TA804317)



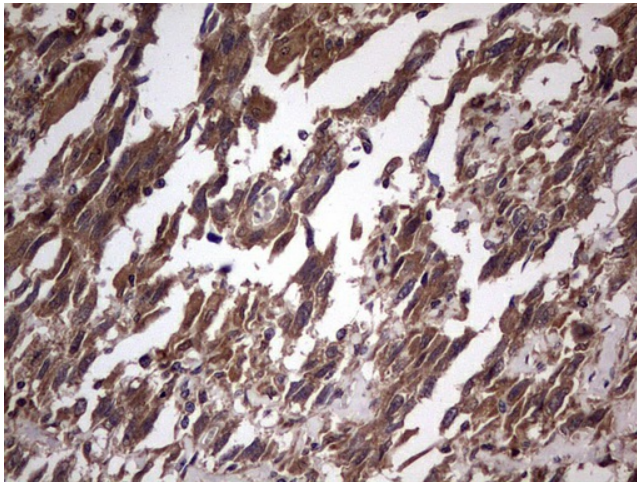
Immunohistochemical staining of paraffin-embedded Carcinoma of Human liver tissue using anti-UFD1L mouse monoclonal antibody. (Heat-induced epitope retrieval by 1 mM EDTA in 10mM Tris, pH8.5, 120°C for 3min, TA804317)



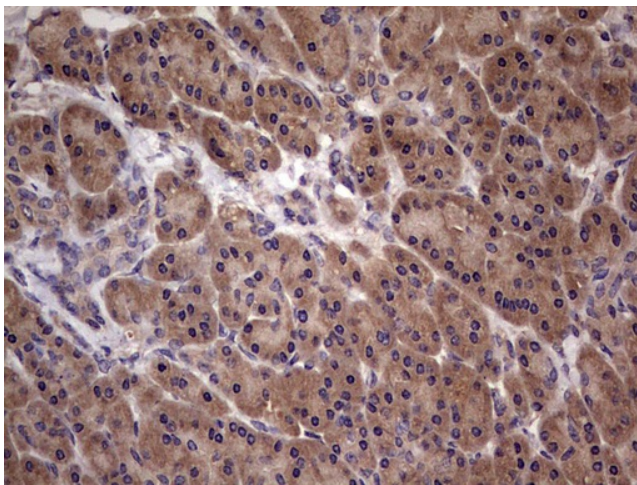
Immunohistochemical staining of paraffin-embedded Human lung tissue within the normal limits using anti-UFD1L mouse monoclonal antibody. (Heat-induced epitope retrieval by 1 mM EDTA in 10mM Tris, pH8.5, 120°C for 3min, TA804317)



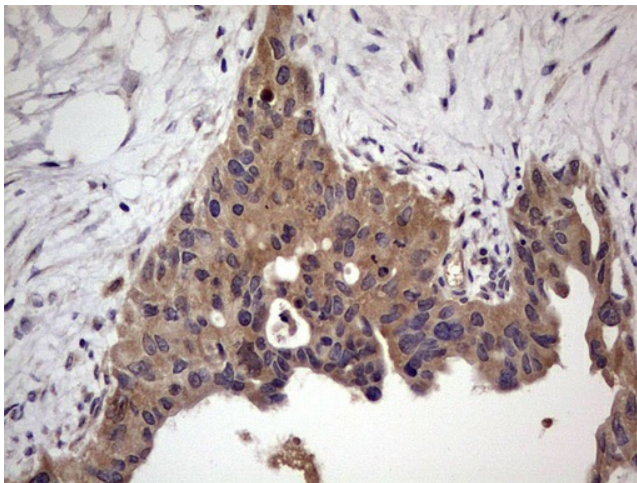
Immunohistochemical staining of paraffin-embedded Carcinoma of Human lung tissue using anti-UFD1L mouse monoclonal antibody. (Heat-induced epitope retrieval by 1 mM EDTA in 10mM Tris, pH8.5, 120°C for 3min, TA804317)



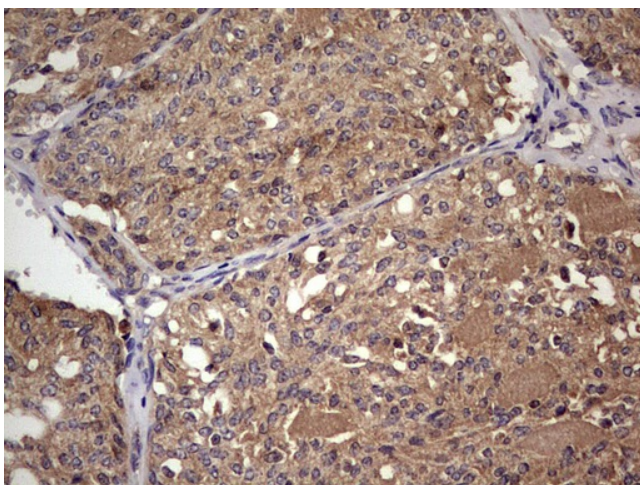
Immunohistochemical staining of paraffin-embedded Adenocarcinoma of Human ovary tissue using anti-UFD1L mouse monoclonal antibody. (Heat-induced epitope retrieval by 1 mM EDTA in 10mM Tris, pH8.5, 120°C for 3min, TA804317)



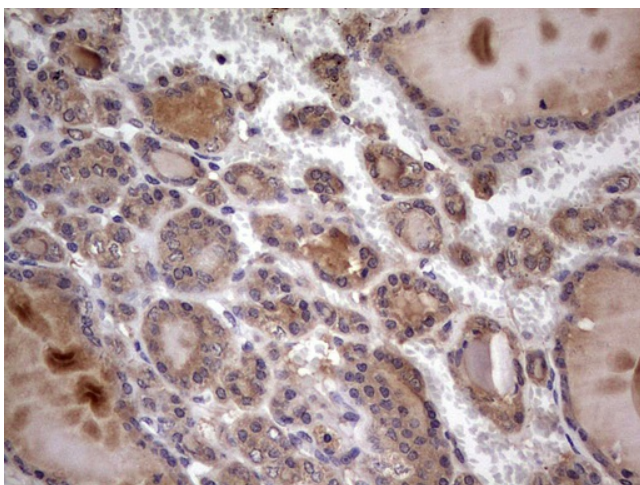
Immunohistochemical staining of paraffin-embedded Human pancreas tissue within the normal limits using anti-UFD1L mouse monoclonal antibody. (Heat-induced epitope retrieval by 1 mM EDTA in 10mM Tris, pH8.5, 120°C for 3min, TA804317)



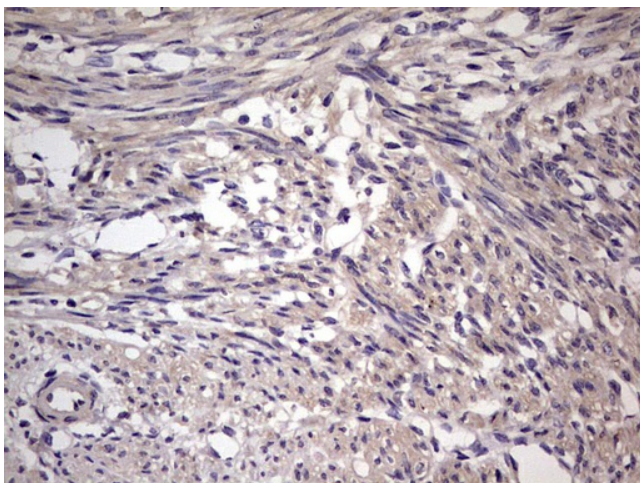
Immunohistochemical staining of paraffin-embedded Carcinoma of Human pancreas tissue using anti-UFD1L mouse monoclonal antibody. (Heat-induced epitope retrieval by 1 mM EDTA in 10mM Tris, pH8.5, 120°C for 3min, TA804317)



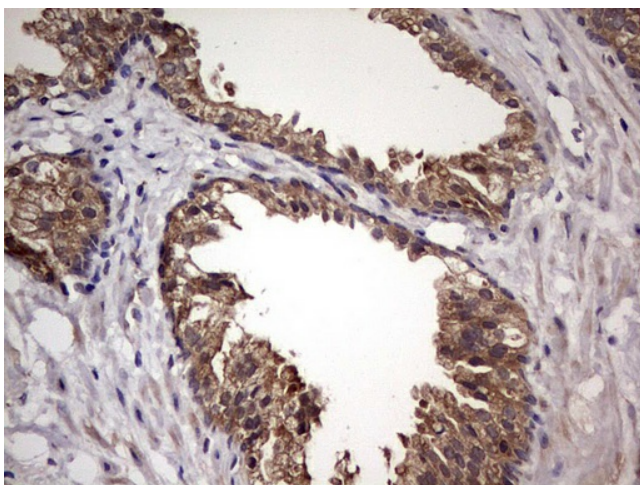
Immunohistochemical staining of paraffin-embedded Human thyroid tissue within the normal limits using anti-UFD1L mouse monoclonal antibody. (Heat-induced epitope retrieval by 1 mM EDTA in 10mM Tris, pH8.5, 120°C for 3min, TA804317)



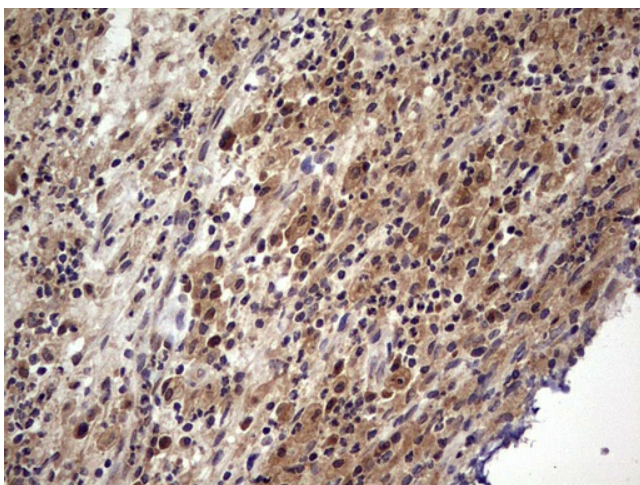
Immunohistochemical staining of paraffin-embedded Carcinoma of Human thyroid tissue using anti-UFD1L mouse monoclonal antibody. (Heat-induced epitope retrieval by 1 mM EDTA in 10mM Tris, pH8.5, 120°C for 3min, TA804317)



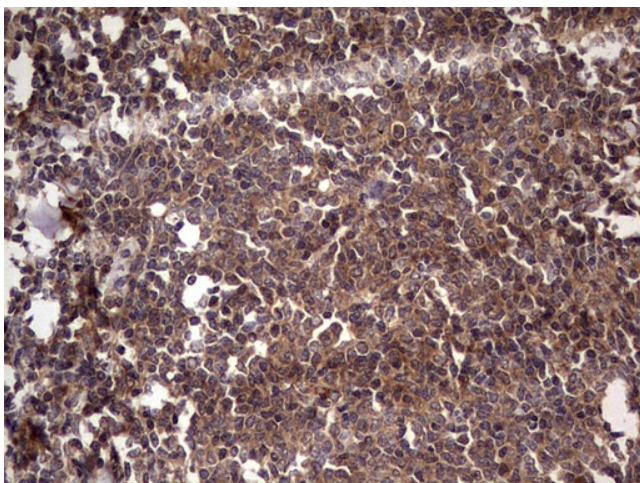
Immunohistochemical staining of paraffin-embedded Human endometrium tissue within the normal limits using anti-UFD1L mouse monoclonal antibody. (Heat-induced epitope retrieval by 1 mM EDTA in 10mM Tris, pH8.5, 120°C for 3min, TA804317)



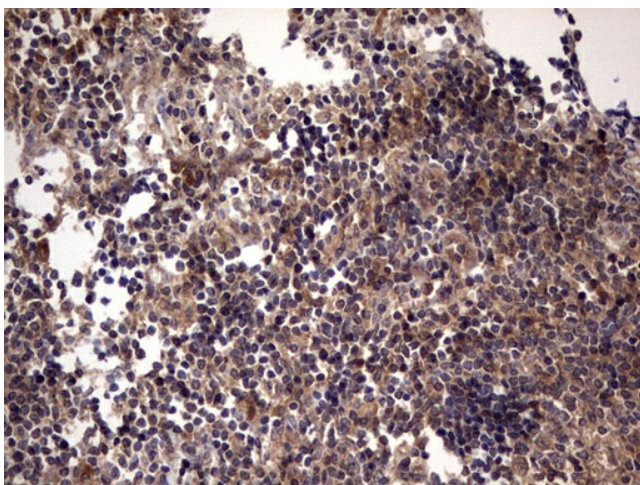
Immunohistochemical staining of paraffin-embedded Carcinoma of Human prostate tissue using anti-UFD1L mouse monoclonal antibody. (Heat-induced epitope retrieval by 1 mM EDTA in 10mM Tris, pH8.5, 120°C for 3min, TA804317)



Immunohistochemical staining of paraffin-embedded Human lymph node tissue within the normal limits using anti-UFD1L mouse monoclonal antibody. (Heat-induced epitope retrieval by 1 mM EDTA in 10mM Tris, pH8.5, 120°C for 3min, TA804317)



Immunohistochemical staining of paraffin-embedded Human lymphoma tissue using anti-UFD1L mouse monoclonal antibody. (Heat-induced epitope retrieval by 1 mM EDTA in 10mM Tris, pH8.5, 120°C for 3min, TA804317)



Immunohistochemical staining of paraffin-embedded Human tonsil within the normal limits using anti-UFD1L mouse monoclonal antibody. (Heat-induced epitope retrieval by 1 mM EDTA in 10mM Tris, pH8.5, 120°C for 3min, TA804317)