

Product datasheet for **TA505931**

Granzyme B (GZMB) Mouse Monoclonal Antibody [Clone ID: OTI4E4]

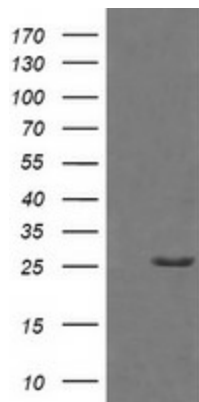
Product data:

| | |
|-------------------------|---|
| Product Type: | Primary Antibodies |
| Clone Name: | OTI4E4 |
| Applications: | IF, IHC, WB |
| Recommend Dilution: | WB 1:2000, IHC 1:150, IF 1:100 |
| Reactivity: | Human |
| Host: | Mouse |
| Isotype: | IgG1 |
| Clonality: | Monoclonal |
| Immunogen: | Human recombinant protein fragment corresponding to amino acids 21-247 of human GZMB(NP_004122) produced in E.coli. |
| Formulation: | PBS (PH 7.3) containing 1% BSA, 50% glycerol and 0.02% sodium azide. |
| Concentration: | 1 mg/ml |
| Purification: | Purified from mouse ascites fluids or tissue culture supernatant by affinity chromatography (protein A/G) |
| Predicted Protein Size: | 25.5 kDa |
| Gene Name: | granzyme B |
| Database Link: | NP_004122 Entrez Gene 3002 Human |
| Background: | Cytolytic T lymphocytes (CTL) and natural killer (NK) cells share the remarkable ability to recognize, bind, and lyse specific target cells. They are thought to protect their host by lysing cells bearing on their surface 'nonself' antigens, usually peptides or proteins resulting from infection by intracellular pathogens. The protein encoded by this gene is crucial for the rapid induction of target cell apoptosis by CTL in cell-mediated immune response. [provided by RefSeq, Jul 2008] |
| Synonyms: | C11; CCPI; CGL-1; CGL1; CSP-B; CSPB; CTLA1; CTSLG1; HLP; SECT |
| Protein Families: | Druggable Genome, Protease |
| Protein Pathways: | Allograft rejection, Autoimmune thyroid disease, Graft-versus-host disease, Natural killer cell mediated cytotoxicity, Type I diabetes mellitus |

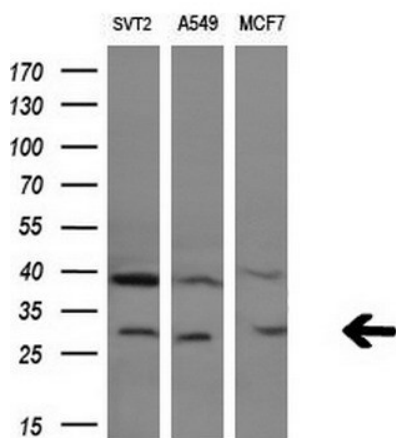


[View online »](#)

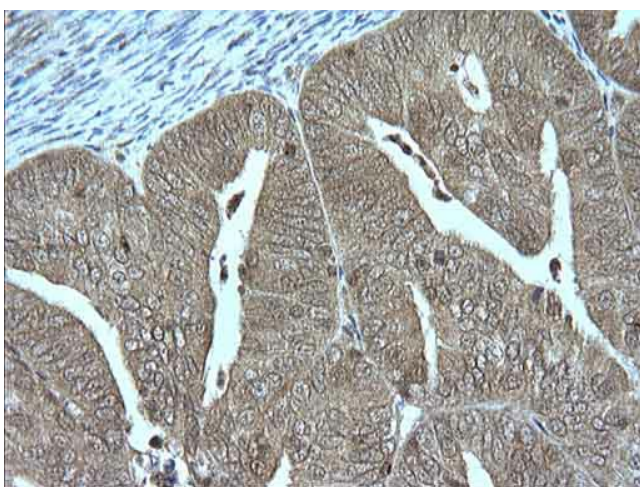
Product images:



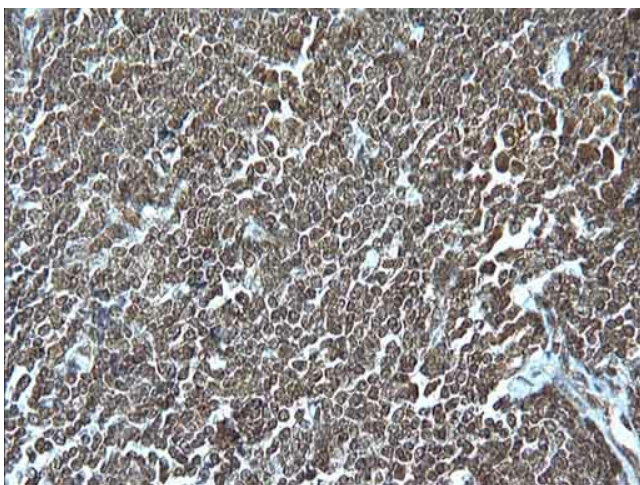
HEK293T cells were transfected with the pCMV6-ENTRY control (Left lane) or pCMV6-ENTRY GZMB ([RC206495], Right lane) cDNA for 48 hrs and lysed. Equivalent amounts of cell lysates (5 ug per lane) were separated by SDS-PAGE and immunoblotted with anti-GZMB. Positive lysates [LY401332] (100ug) and [LC401332] (20ug) can be purchased separately from OriGene.



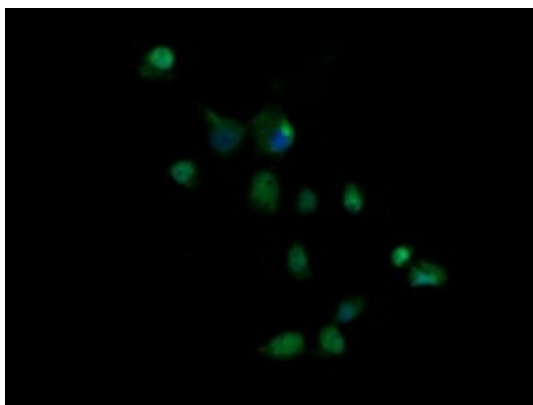
Western blot analysis of extracts (10ug) from 3 different cell lines by using anti-GZMB monoclonal antibody (1:200).



Immunohistochemical staining of paraffin-embedded Adenocarcinoma of Human endometrium tissue using anti-GZMB mouse monoclonal antibody. (Heat-induced epitope retrieval by 10mM citric buffer, pH6.0, 120°C for 3min, TA505931)



Immunohistochemical staining of paraffin-embedded Human lymphoma tissue using anti-GZMB mouse monoclonal antibody. (Heat-induced epitope retrieval by 10mM citric buffer, pH6.0, 120°C for 3min, TA505931)



Anti-GZMB mouse monoclonal antibody (TA505931) immunofluorescent staining of COS7 cells transiently transfected by pCMV6-ENTRY GZMB ([RC206495]).