

## Product datasheet for **TA346998**

### Lamin A (LMNA) Mouse Monoclonal Antibody [Clone ID: 5D12-C6-E9]

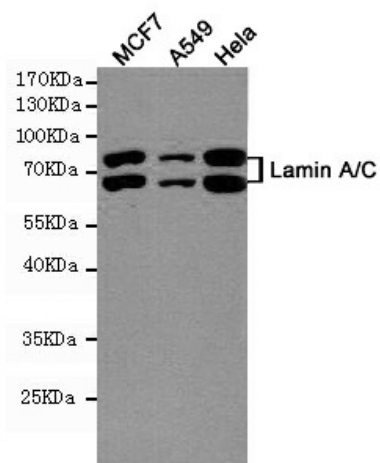
#### Product data:

Product Type:	Primary Antibodies
Clone Name:	5D12-C6-E9
Applications:	IF, WB
Recommend Dilution:	WB: 1:1000, IF: 1:200
Reactivity:	Human
Host:	Mouse
Isotype:	IgG1
Clonality:	Monoclonal
Immunogen:	The immunogen for LMNA antibody: purified recombinant human LMNA protein fragments expressed in E.coli.
Formulation:	0.03% Proclin300 and 50% glycerol.
Predicted Protein Size:	74/63 kDa
Gene Name:	lamin A/C
Database Link:	<a href="#">NP_005563 Entrez Gene 4000 Human</a>
Background:	The nuclear lamina consists of a two-dimensional matrix of proteins located next to the inner nuclear membrane. The lamin family of proteins make up the matrix and are highly conserved in evolution. During mitosis, the lamina matrix is reversibly disassembled as the lamin proteins are phosphorylated. Lamin proteins are thought to be involved in nuclear stability, chromatin structure and gene expression. Vertebrate lamins consist of two types, A and B. Alternative splicing results in multiple transcript variants. Mutations in this gene lead to several diseases: Emery-Dreifuss muscular dystrophy, familial partial lipodystrophy, limb girdle muscular dystrophy, dilated cardiomyopathy, Charcot-Marie-Tooth disease, and Hutchinson-Gilford progeria syndrome.
Synonyms:	CDCD1; CDDC; CMD1A; CMT2B1; EMD2; FPL; FPLD; FPLD2; HGPS; IDC; LDP1; LFP; LGMD1B; LMN1; LMNC
Protein Families:	Druggable Genome
Protein Pathways:	Arrhythmogenic right ventricular cardiomyopathy (ARVC), Dilated cardiomyopathy, Hypertrophic cardiomyopathy (HCM)

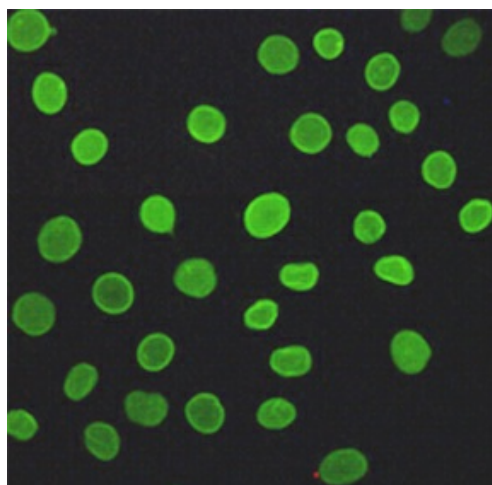


[View online »](#)

## Product images:



Western blot detection of Lamin A/C in MCF7, A549 and HeLa cell lysates using Lamin A/C mouse mAb (1:1000 diluted). Predicted band size: 74, 63KDa. Observed band size: 74, 63KDa.



Immunofluorescent analysis of A549 cells fixed with 4% Paraformaldehyde and using anti-Lamin A/C mouse mAb (dilution 1:200).